



Product Information



Induraplate

SOLID ALUMINIUM PANELS



Induraplate

SOLID ALUMINIUM PANELS

About Induraplate.

Induraplate is a 3mm non-combustible solid aluminium cassette cladding system that forms part of Paneltec's range of fully compliant, non-combustible cladding solutions.

Induraplate is a durable, high impact resistant, solid panel which can be curved and rolled. Induraplate features the same PVDF coating system as Paneltec's Induracore G2; well proven for its superior quality, extensive colour range and integrity; unlike traditional 3mm powder-coated aluminium.

Induraplate panels are prefinished and the flexibility of the PVDF coating means that they do not require fabrication prior to coating unlike traditional powder coated cassettes, which minimises lead-times, damage and costs.

Key Features.



NON-COMBUSTIBLE

Induraplate is AS1530.1 certified non-combustible



PAINT SYSTEM

Induraplate only uses the highly recognised PVDF KYNAR 500 or FEVE paints known for their high durability, providing the optimum resistance to weather and industrial pollutants.



INFRASTRUCTURE

Being full scale fire tested and offering simple and lightweight fabrication make Induraplate a suitable product for large infrastructure projects.



WEATHERPROOFED

Induraplate is weatherproofed to E2 standards when using Paneltec's NZS4284 tested system.



VERSATILE

Induraplate can be custom designed into a wide range of shapes and dimensions as well as able to be perforated or curved in some applications making it a versatile design choice.



CONCEALED FIX SYSTEM

Induraplate is the same to fabricate and install as traditional ACP by CNC routing panels into the concealed fix z-angle cassette system.



HIGH DURABILITY

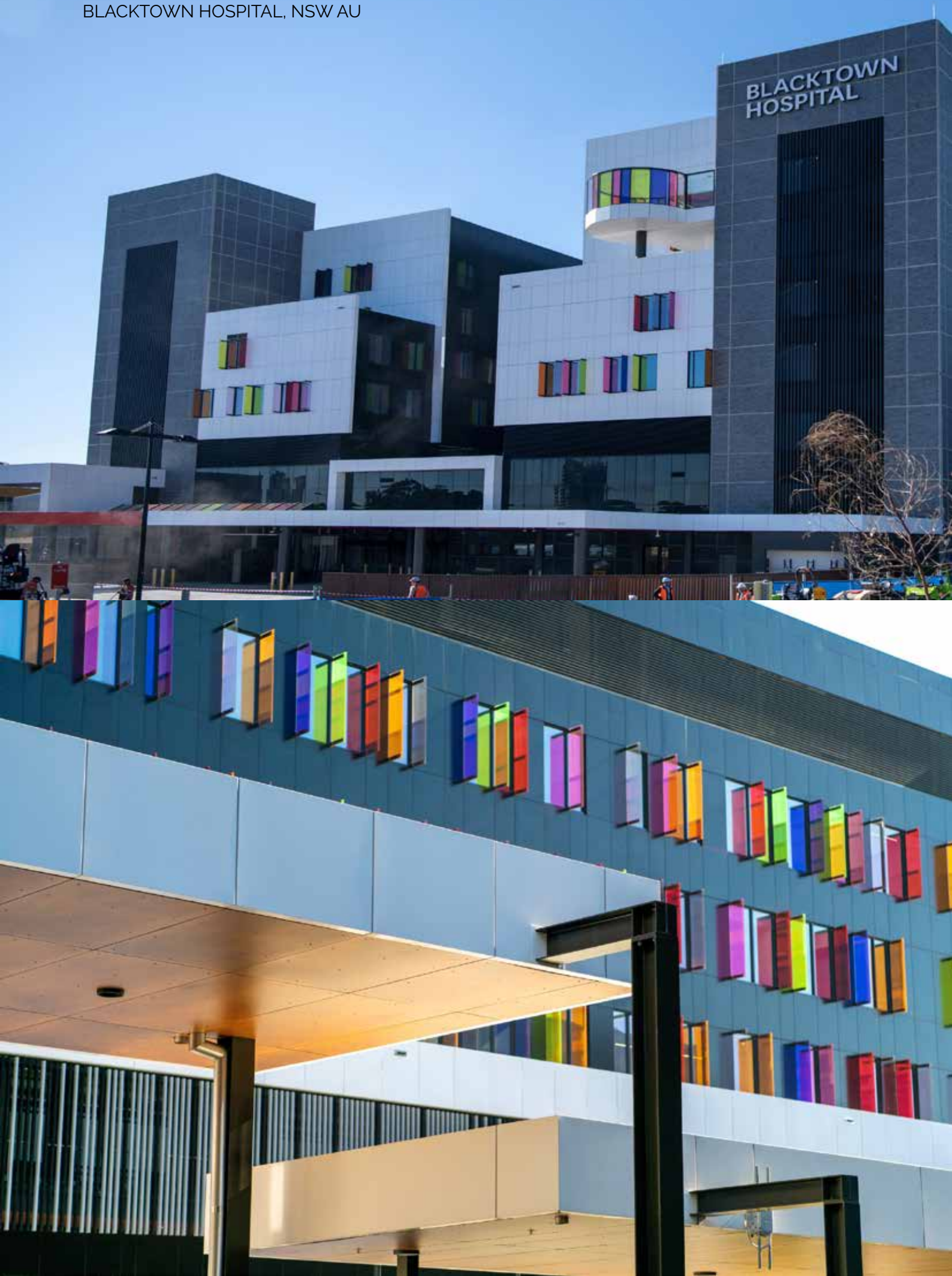
Induraplate panels are highly durable and impact resistant. They can be used effectively in high traffic areas.



WARRANTY

Induraplate has up to a 15 year warranty when installed by a licensed installer

BLACKTOWN HOSPITAL, NSW AU





Fire Resistance.

In today's Architecture, it is the technical details, as well as the appearance that count; such as sustainability, thermal insulation, and fire protection.

Induraplate is one of the few large format cladding panels that are non-combustible when tested to AS1530.1.

Visually, Induraplate is similar to traditional composite panel, however what makes it different is the fact that it is constructed from 100% aluminium, rather than combustible material such as polyethylene and fire rated mineral. This makes Vitradual an ideal product for all applications where non- combustible panels are required; such as high-rise buildings, schools or hospitals.

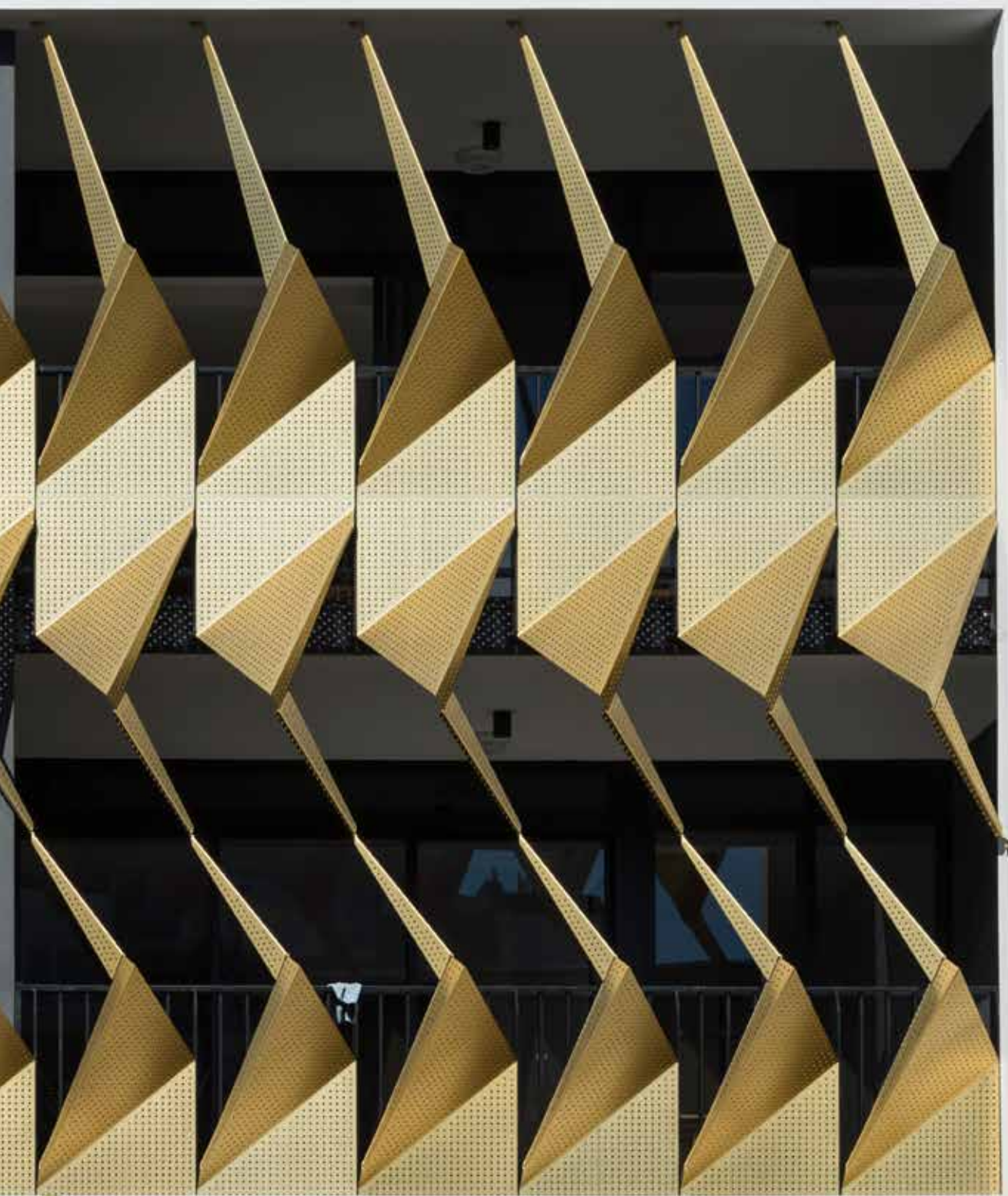
As with all building products, the use of Vitradual must be authorised by the regulatory body.

The Fire Resistance standards achieved with standard Induraplate are as follows:

INDURAPLATE			
TEST STANDARD	RESULT		
AS1530.1	Non-Combustible		
AS1530.3	PASS	Ignitability Index	0
	PASS	Heat Evolved	0
	PASS	Spread of Flame	0
	PASS	Smoke Developed	1

Applications.

Induraplate is an ideal cladding solution for infrastructure projects such as schools and hospitals as it is high impact resistant as well as being fully compliant, non-combustible. The PVDF coating system also adds a superior finish which provides optimum resistance to weather and industrial pollutants.



Manufacturing Quality.

A dedication to the total fulfillment of our client's and customer's expectations is reflected by a complete quality control system, beginning at the point of specification and continuing through to delivery of the guaranteed products. All activities are carried out in a manner which:

- Uses the framework of ISO9001 Quality Standards to verify the quality of our systems
- Ensures that our products and services are of the highest standards
- Create continuous improvements to our product through the application of the best quality practices.

Acceptance Variation.

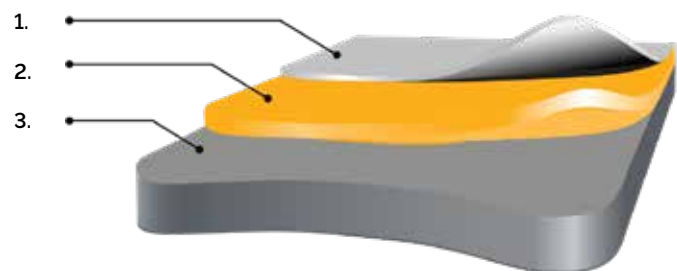
WIDTH	±2.0 mm
LENGTH	±4.0 mm
THICKNESS	±2% for 3 mm
BOW MAXIMUM	0.5% of the length and/or width
SQUARENESS MAXIMUM	5.0 mm
SURFACE DEFECTS	The surface shall not have any irregularities such as dents, scratches and other imperfections in accordance with our quality assurance.

Warranty.

The standard warranty is up to 15 years, with longer warranties available on a project specific basis.

Typical Composition.

1. Protective film
2. PVDF-Kynar 500 coating system
3. 3mm Aluminium



Dimensions.

Width	Length	Thickness
1250/1500	2500	3mm
	3200	
	4000	
Custom sizes are available, please speak to the Paneltec team.		

* May not be available in all finishes.

Weight.

Thickness	Weight [Kg/M ²]
3mm	8.1

Technical Data.

Classification	Test Standard	Unit	Induraplate
Panel Weight		[kg/m ²]	8.1
Thickness		[mm]	3
Thickness of Aluminium face		[mm]	3
Maximum Width		[mm]	1500
Aluminium Skin			
Alloy/Temper of Aluminum layers			Minimum 3001 series
Surface Properties (PVDF Coatings)			
Dry film thickness (nominal)	ASTM D1400		0.20-0.30 mil primer 0.70-0.80 mil topcoat
Gloss	ASTM D523		Standard @ 60°: 25-35 Duranar LG @ 85°: <10
Pencil Hardness	ASTM D3363		F-2H
Flexibility	T-Bend, ASTM D4145		0-2 T-Bend; No pick-off
Adhesion	ASTM D3359 Reverse Impact 1/16' crosshatch		No adhesion loss
Reverse Impact	ASTM D2794		1.5 x Metal thickness (aluminium); No cracking or adhesion loss
Acid Resistance	ASTM D1308		10% Muriatic acid - 24 hrs: No effect
Acid rain Test	Kesternich SO ₂ , DIN 50018		15 Cycles min. No objectionable colour change
Alkali Resistance	ASTM D1308 10%, 25%, NaOH, 1 hr.		No effect
Salt spray Resistance	ASTM B117 5% salt fog @ 95° F		Passes 4000 hrs. Less than 1/1' avg. creepage from scribe; None or few #8 blisters
Humidity Resistance	ASTM D714 ASTM D2247 100% relative humidity @ 95°F		Passes 4000 hrs. No #8 blisters
Exterior Exposure	10 yrs. @ 45°, South Florida ASTM D2244ASTM D4214		Max. 5 fade Max. 8 chalk

CALIBRE EASTERN CREEK,
NSW AU

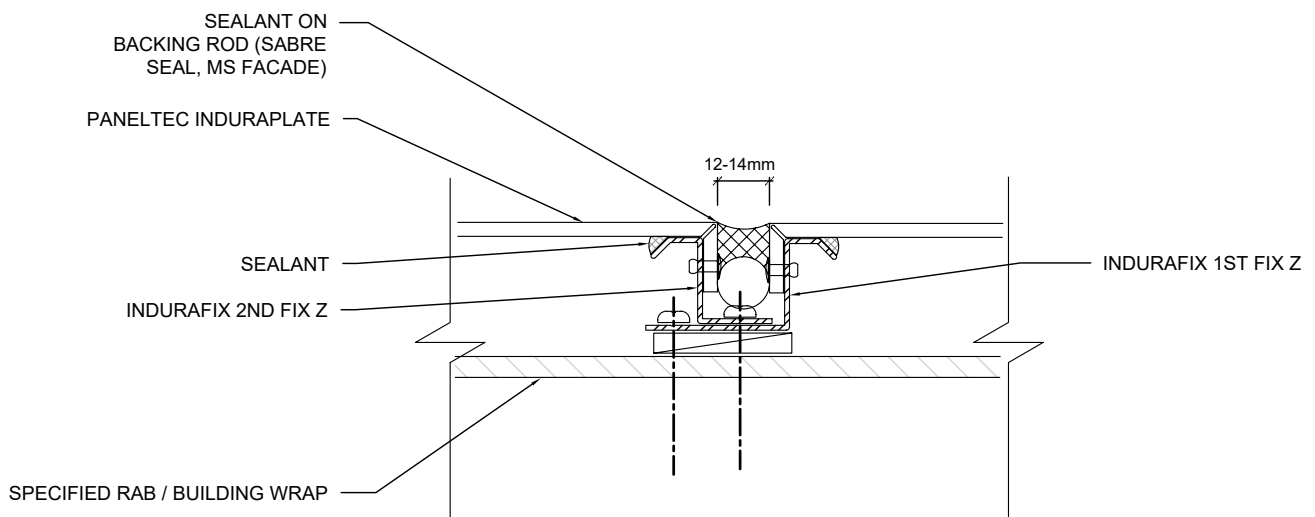


Finish.

Induraplate uses only the highly recognised PVDF KYNAR 500 or FEVE paints known for their high durability. These premium paints provide an optimum resistance to weather and industrial pollution. More than 50 years of South Florida Exposure Testing is continuing to confirm the superior chemical and physical properties of fluoropolymer coatings.

Induraplate has virtually unlimited colour range and we are able to match almost any panel finish.

Fixing System.



Concept Drawing Only.

For more details, please refer to the Paneltec Induraplate Installation Manual



Colours.

Induraplate is available in the following colours in a MOQ of 600m².

Please refer to our Induracore G2 colour chart for other finishes, as well as custom matched colours that can be applied to Induraplate for 1200m² MOQ.



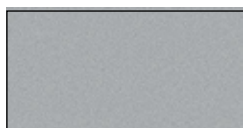
IP9902 Pure White



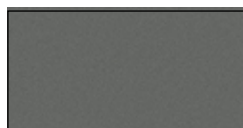
IP1266 Thriller Grey



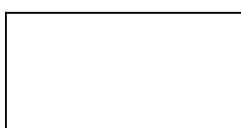
IP9130 Enigma Black



IP9701 Silver Ice Metallic



IP9137 Dark Grey Metallic



IP1005 Snow White





Inspiring design, Manufacturing possibilities

p. 0508 PANELTEC
0508 726 3582
(09) 439 4357

e. info@paneltec.co.nz

www.paneltec.co.nz

